



Supply Underground Dewatering Pods and Mains Road Pump Station

Customer: Ausenco – Kestrel Coal Mine Expansion

Location: 50km NE of Emerald, QLD

Case Study ID: CS-71

Date: December 2012

Overview

Dowdens Pumping and Water Treatment supplied 13 underground skid-mounted dewatering pods and a mains road pump station ('Fish Tanks') for Ausenco's Kestrel Coal Mine Expansion, located 50km northeast of Emerald, Queensland.

The Kestrel Coal Mine produces coking and thermal coal, and the expansion has extended the life of the mine by 20 years. Portable 'Fish Tanks' are used in underground mines as a part of the water management process.

Head Office

9-15 Industrial St
Mackay QLD 4740
Ph: +61 7 4969 4949
Email: info@dowdens.com.au

Brisbane Office

24/140 Wecker Road
Mansfield QLD 4122
Ph: +61 7 3828 7000
Email: brisbane@dowdens.com.au

Rockhampton Office

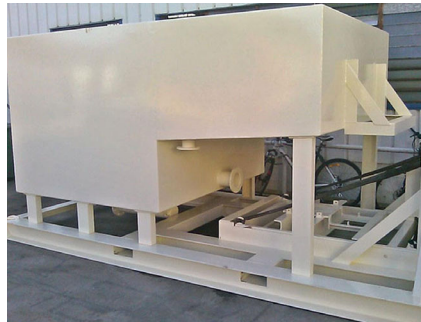
4/415 Yaamba Road
Park Avenue QLD 4701
Ph: +61 7 4923 6969
Email: info@dowdens.com.au

Proserpine Office

2 Mann St
Proserpine QLD 4800
Ph: +61 7 4969 4940
Email: info@dowdens.com.au

The Problem

The Kestrel Coal Mine Expansion required Portable 'Fish Tanks' which are used for dewatering as part of the mine site's water management process.



Our Solution

Dowdens Pumping and Water Treatment designed, manufactured and supplied relocatable (skid-mounted) 'Fish tank' pump stations.

Each 'Fish tank' pump station is comprised of a Hopper (a sump on a skid), a horizontal centrifugal pump coupled to an explosion-proof motor, and a hopper level control switches hardwired to an on-board, explosion-proof Motor Control Cubicle/Starter, and Flowmeter. All of these increase the efficiency of the product.

Key Components & Features

- 10,000L and 14,000L tank capacity
- Modular, bolt-together design can withstand the rigours of underground use
- Fitted with channel guard rails to protect essential components from collision damage
- Corrosion protection is achieved through painting with high build epoxy
- 'Fish Tanks' are supplied with a Flameproof control panel
- The pump motor used is a WEG flameproof 1000 VAC
- Nominal Duty Point: 50L / second
- Design lifespan of 20 years
- Forklift tyne pockets for easy maneuverability
- Quick Detach System (QDS) attachment
- Tow points
- Chain lifting points
- Maximum equipment height of 2.4m

Head Office

9-15 Industrial St
Mackay QLD 4740
Ph: +61 7 4969 4949
Email: info@dowdens.com.au

Brisbane Office

24/140 Wecker Road
Mansfield QLD 4122
Ph: +61 7 3828 7000
Email: brisbane@dowdens.com.au

Rockhampton Office

4/415 Yaamba Road
Park Avenue QLD 4701
Ph: +61 7 4923 6969
Email: info@dowdens.com.au

Proserpine Office

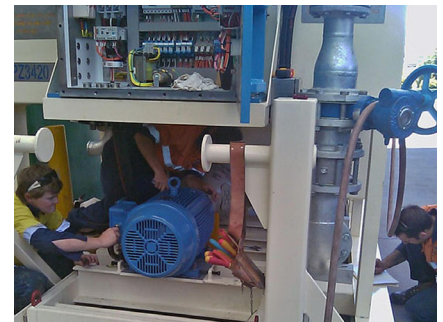
2 Mann St
Proserpine QLD 4800
Ph: +61 7 4969 4940
Email: info@dowdens.com.au

- All aspects of 'Fish Tanks' suitable for use, and have certified explosion protection as required for operation in Queensland coal mines.

Project Design Philosophy

Dowdens Pumping & Water Treatment's Rockhampton branches design philosophy for this project was:

- Cost-Effectiveness
- Innovation
- Ease of Installation
- Simple & Effective Pump Operation
- Engine Longevity
- System Reliability & Reduced Ongoing Maintenance



Brands used in this project



Head Office

9-15 Industrial St
Mackay QLD 4740
Ph: +61 7 4969 4949
Email: info@dowdens.com.au

Brisbane Office

24/140 Wecker Road
Mansfield QLD 4122
Ph: +61 7 3828 7000
Email: brisbane@dowdens.com.au

Rockhampton Office

4/415 Yaamba Road
Park Avenue QLD 4701
Ph: +61 7 4923 6969
Email: info@dowdens.com.au

Proserpine Office

2 Mann St
Proserpine QLD 4800
Ph: +61 7 4969 4940
Email: info@dowdens.com.au